

Technical Details

Wavelength	980 nm
Power at Tissue	5 - 210 Watts, in 1-/10-Watt-Steps
Operation Modes	LFD Advanced Mode for Prostate Treatment, Continuous Wave (CW), Pulsed Mode
Delivery System	Both Side-Fire Fibers & Bare Fibers
Pilot Beam	635 nm (red), max. 3 mW, adjustable
Cooling	Internal
Memory	Freely Customizable for Various Treatments
Display	10,4" True Color Touch-Panel (Medical Approved)
Electrical Requirements	230 V (10 A) / 110 V (16 A), 50 / 60 Hz, single-phase
Dimensions	50 x 100 x 95 cm (WxHxD)
Weight	98 kg

Company Profile

Limmer Laser GmbH is a German manufacturer of a broad range of Medical Lasers and accessories. Among others, its product range includes CO₂ Lasers, Diode Lasers as well as Er:YAG Lasers and offers effective solutions for all major disciplines.

With a strong focus on service and product quality as well as a comprehensive portfolio of worldwide established products, Limmer Laser GmbH increasingly extends its offerings to an even wider public. **As one of very few medical laser manufacturers, we are fully certified according to EN ISO 13485:2003.**

Today the company acts as a reliable and recognized partner for development, production and service. Its comprehensive know-how about technology as well as treatments enables it to successfully compete in the ever more dynamic and demanding market of medical lasers.

DIOLAS

LFD Advanced



Technical changes reserved.

Laser certified according to IEC 60601-1:2005
(DIN EN 60601-1:2007).

MED/CERT
EN ISO 13485:2003

Partner of
Berlin Adlershof
City of Science, Technology & Media

Limmer Laser GmbH
Schwarzschildstr. 1
D-12489 Berlin (Germany)

Tel. +49 (0)30 - 6392 5570
Fax +49 (0)30 - 6392 5580

info@limmerlaser.de · www.limmerlaser.de

A Breakthrough in Medical Technology:
The Worldwide First High-Power Diode Laser

Limmer
L A S E R

Innovative Operation Mode LFD Advanced

LIMMER LASER

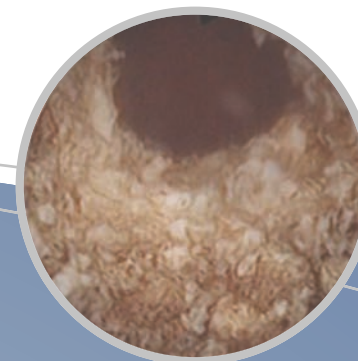
Before Treatment



During Treatment



After Treatment



Key Indications

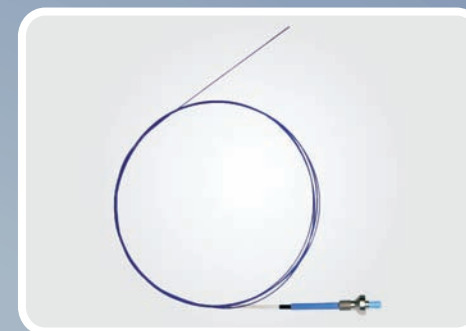
- » BPH (*Benign Prostate Hyperplasia*)
- » Bladder Tumor
- » Stenosis of the Urethra and Ureter
- » Vaporization of Urethral Warts
- » Condylomata
- » Testectomy
- » Circumcision
- » Meatotomy
- » and many more

Main Advantages

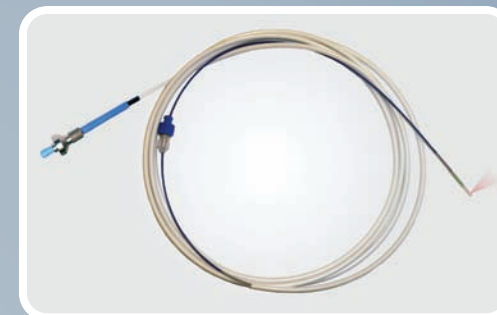
- » **Innovative Operation Mode LFD Advanced**, in Particular for the Treatment of Benign Prostate Hyperplasia (BPH)
- » **Easy-to-Use** Touch Panel With a Large-Scale, Colored Display of all Control Elements on an Extensive 10,4" (26 cm) Screen
- » **Straight-Forward** Usage of the Laser, Parameters are Entered Directly
- » **Less Bleeding** Than With Competitive Products - Faster Operative & Recovery Times
- » **Display of Accumulated Energy** and the Current Output Level as Digits and by a Progress Bar
- » **Statistical Analysis** of the Treatment Parameters, also Storable on a Regular USB Stick (optional)
- » **Low Noise Level** by Automated Surveillance and Regulation of the Internal Cooling System
- » Service & Status Messages in **Plain Text**

Accessories

Two Different Fibers are Available for Beam Delivery:



» Bare Fiber



» Side-Fire Fiber

DIOLAS

LFD Advanced